



- Beimen Visitor Center**
09:00-17:30, Closed on Chinese New Year's Eve
No. 200, Jiucheng, Beimen Village, Beimen Dist., Tainan City.
Tel:06-786-1017
- Kouhu Visitor Center**
09:00-17:30, Closed on Chinese New Year's Eve
No. 163, Guangming Road, Wunan Village, Kouhu Township, Yunlin County.
Tel:05-790-6601
- Budai Visitor Center**
00:00-24:00
No. 61 Shun'an Road, Budai Township, chiayi County.
Tel:05-347-6788
- Qigu Visitor Center**
09:00-17:30, Closed on Chinese New Year's Eve
No. 102-8, Yancheng Village, Qigu Dist., Tainan City.
Tel:06-780-1751
- First Mapower Workshop**
09:00-17:00
No. 1-2, Waipu Kouhu Township, Yunlin County.
Tel:0963-120-203
- Budai 543 Story House**
09:00-17:00
No. 46, Ruchuan Rd. Budai Township, Chiayi County.
Tel:05-347-0051
- Jingzailiao Tile-paved Salt Fields**
09:00-18:00
No. 64, Jingzailiao., Beimen Dist., Tainan City.
Tel:06-786-1629
- Taiwan Salt Museu**
(It is temporarily closed for renovation. Sorry for the inconvenience.)
09:00-17:30
No. 69, Yancheng., Qigu Dist., Tainan City.
Tel:06-780-1775

Southwest Coast National Scenic Area
Headquarters, Tourism Administration,
Ministry of Transportation and Communications

No. 119, Jiucheng, Beimen Dist., Tainan City.
Tel:06-786-1000
Fax:06-786-1234

Advertisement

Romantic Camera

Beimen Wedding Wonderland

The Beimen Wedding Wonderland is the first wedding photography-themed park in Taiwan. Centered on the Beimen Visitor Center, it links with the Beimen Old Street, Salt Washing Plant historic buildings, Money Coming Grocery Store, salt fields, crystal Church, and the Southwest Coast National Scenic Area Administration. The park covers about 7 hectares and contains exotic landscape houses, romantic paintings, and art installations that evoke images of weddings and romance. This is indeed a wonderland with a rich Mediterranean atmosphere and numerous renovated historic buildings.

📍 No. 200, Beimen Village, Beimen Dist.
📞 06-786-1017



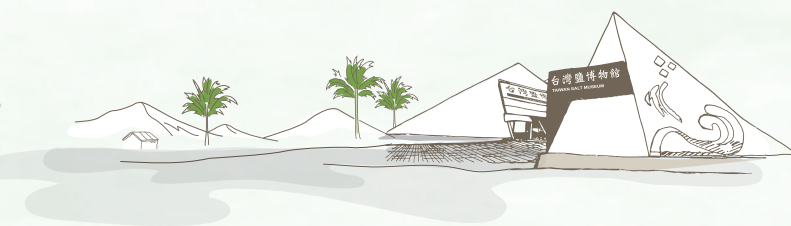
Crystal Church

This is the first church in Taiwan designed on a wedding-photography theme, and is the park's star attraction. Its elegant form rises over the water and is reflected in the surface, attracting newlyweds, soon-to-be newlyweds, and others to take pictures using it as a backdrop.

📍 23° 15'52.6"N 120° 07'20.4"E

A Tour of Salt Industry Glories

Taiwan Salt Museum—Largest in Asia



Taiwan's only museum dedicated to salt industry, the Taiwan Salt Museum is located beside Qigu Salt Mountain. Its form is modeled on piles of salt, looking like two pyramids rising amid the salt fields. It displays artifacts from 338 years of salt production in Taiwan, and records the sweat and tears of the salt workers. The museum's displays include depictions of salt workers' production processes on the first floor, introductions of Taiwan's salt-industry history and related scientific experiences on the second floor, and exhibits of Poland's salt mines and Sichuan's salt wells on the third floor. When you come here, you must try the uniquely flavored "salt coffee" and other salt products.

📍 No. 69, Yancheng Village, Qigu Dist.
📞 06-780-0698
🕒 09:00 - 17:30
(Last ticket sales at 17:00; retail shops close at 18:00)



Beimen Visitor Center

The Visitor Center is in a converted warehouse at the southwestern side of an old salt-washing plant. The building retains the original appearance of its

old gabled walls and sloped roof, while the Visitor Center inside provides tourist information and other services. In addition to whale bones, the Sperm Whale Area contains a wall displaying the art of primitive painter Hong Tong.

📍 No. 200, Jiucheng, Beimen Village, Beimen Dist.
📞 06-786-1017
🕒 09:00 - 17:30 • Closed Chinese New Year's Eve

Former Residence of Hong Tong

The unschooled primitive painter Hong Tong, known as "The Picasso of the East," created richly colored works of magical allure that attracted attention in Taiwan and internationally. He lived in Xincuozei Community in Beimen's Kunjiao Village; some of the community's walls are covered with his creations, making this a tourist hotspot.



The Money Coming Grocery Store became famous as a site where scenes in the TV drama The Prince Who Turns Into a Frog were shot.

Money Coming Grocery Store

This structure was originally built in 1952 as an employee store for the Taiwan Salt Corp. In 2003, long after the salt fields were idled, the old building was given a new purpose. Its outer walls are made of waste tiles and seashells; its appearance, and the goods it sells, all have an old-time taste.

📍 No. 187, Jiucheng, Beimen Village, Beimen Dist.
📞 06-786-2627
🕒 Weekdays 10:30 - 17:30 • holiday 09:00 - 18:00

Salt Mountain products



Qigu Salt Mountain

The salt fields at Qigu were Taiwan's largest, covering more than 2,700 hectares. They supplied salt mainly for domestic agricultural and industrial use, but after being idled the fields were converted to recreational use. At the 20-meter tall Qigu Salt Mountain today, visitors can climb on steps to the top for views of surrounding fishery and salt-production scenes. They can also travel through the area on a park bus or see it by bicycle.

📍 No. 66, Yancheng Village, Qigu Dist.
📞 06-780-0511 # 49
🕒 Summer season (March-October) 09:00 - 18:00
Winter season (November-February) 08:30 - 17:30

Qingkunshen Fan-shaped Salt Fields

Located in Kunshen Village of Tainan City's Jiangjun District, between Jiangjun Fishing Harbor and Qingkunshen, the Qingkunshen Fan-shaped Salt Fields were developed by Taiwan Sugar in 1975 using sand bars and filling in an inland sea. Now idled, the fields expand outward in a fan shape from the salt-workers' dormitory. The fan shape of these unique fields is best viewed from the air.

📍 23° 11'35.1"N 120° 05'24.7"E



Beimenyu Church (Little White House)

When blackfoot disease was ravaging the Beimen area, the Beimenyu Church and Dr. Wang Jin-he labored to alleviate its physical and mental impact. Today the church has become a hotspot for wedding photography, and the European-style "Beimen Little White House" behind it evokes a foreign romance.



📍 No. 31, Beimen, Yonglong Village, Beimen Dist.
📞 06-786-2138

Beimen Salt Administration Office

This office, built in 1923, was responsible for the marketing of salt and collection of the salt tax. The building is a combination of British and Japanese styles, and contains not a single nail. It is held together by the mortise and tenon method.

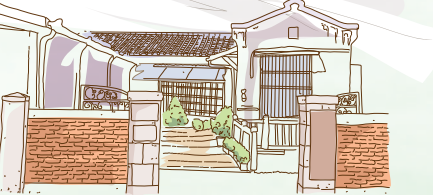


📍 23° 16'07.9"N 120° 07'27.4"E

Taiwan Blackfoot Socio-Medical Service Memorial House

Blackfoot disease ravaged coastal Chiayi and Tainan in 1957. The Mustard Seed Mission and Dr. Wang Jin-he together established the Jin-he Clinic in Beimen to provide free treatment to sufferers. Dr. Wang devoted a great deal of his life to this effort, and this Memorial House was established in 2007 to honor his contributions—and those of other medical and church personnel—in relieving the suffering of his countrymen.

📍 No. 27, Yonglong Village, Beimen Dist.
📞 06-786-2012



Jingzailiao Tile-paved Salt Fields

These were the first salt fields in the Beimen area, and the oldest that still exist in Taiwan. The neat array of tile-paved salt pans appear like a work of mosaic art; after being idled and then restored, they have become a tourist attraction where visitors can experience traditional salt drying, pole-carrying, and harvesting.

📍 Beimen Dist., Beside Xing'an Temple in Jingzailiao.
📞 06-786-1629
🕒 08:30 - 18:00

🌐 For educational institutions and other groups, guide services can be arranged by telephone in advance.



Feathers Through the Lens

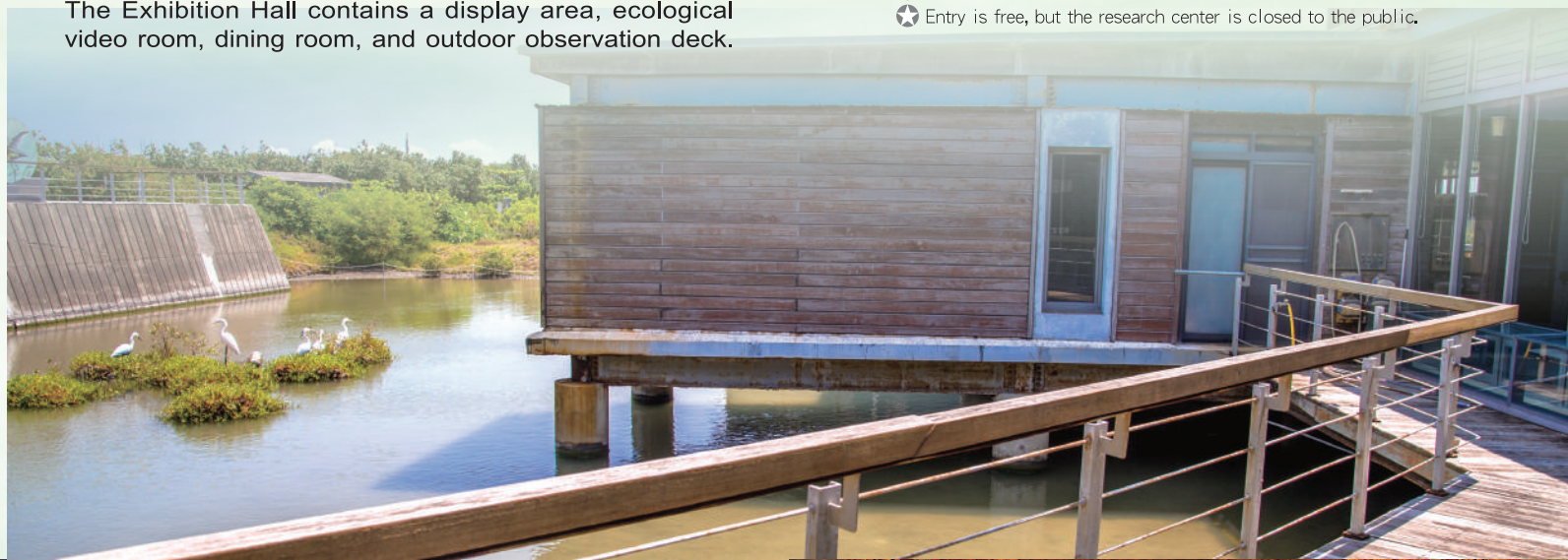


Black-faced Spoonbill Ecology Exhibition Hall

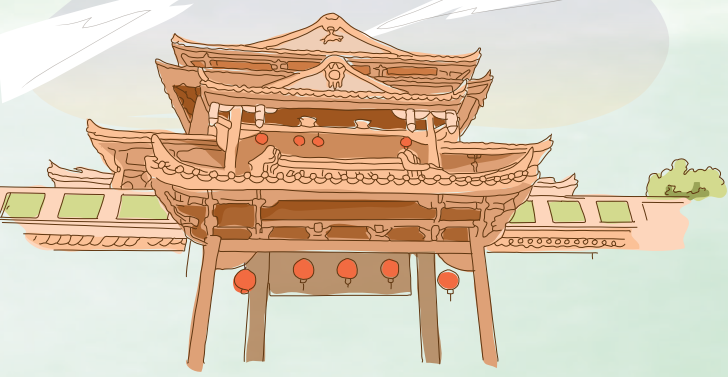
This Exhibition Hall is located within the Black-faced Spoonbill Reserve at the Zengwen River estuary. The reserve covers 300 hectares of sandbars and tidal lands, providing a rich ecosystem that attracts large numbers of migratory birds—especially the protected black-faced spoonbill—to come and forage. The Exhibition Hall contains a display area, ecological video room, dining room, and outdoor observation deck.

When the black-faced spoonbills fly in every winter, visitors can watch their feeding and other behaviors from here, and can participate in irregular spoonbill conservation activities.

📍 No. 47, Haipu, Shifen Village, Qigu Dist.
📞 06-788-1180#204
🕒 Exhibition Hall open from Tuesday to Sunday; closed on Mondays.
🌐 Entry is free, but the research center is closed to the public.



Cultural Collection



Nankunshen Daitianfu Temple

Built in 1662, this temple has a history of more than 350 years. It is devoted to Five Kings—plague gods—named Li, Chi, Wu, Zhu, and Fan, and has more branch temples all over Taiwan than any other temple. It is the island's largest and oldest plague god temple. Besides the opulent and impressive temple itself, its complex also includes lovely gardens and pavilions. The Michelin Green Guide gives it three stars.

📍 No. 976, Kunjiang Village, Beimen Dist.
📞 06-786-3711



Sanliaowan Donglong Temple

Built as a shrine in 1665 for the worship of King Li, a plague god, this edifice was rebuilt as a temple during the late Qing and renamed Ci'an Temple. After the plague god King Wen from Donggang's Donglong Temple was moved here in 1945, the temple was again rebuilt and renamed Donglong Temple in 1949. It holds a Burning of the King Boat Festival every three years, at the same time as Donggang's temple of the same name. Its Wangye (Plague God) Cultural Gallery exhibits an interesting collection of religious and cultural artifacts.

📍 No. 95, Sanliaowan, Sanguang Village, Beimen Dist.
📞 06-785-0135



front of the temple you can buy the fresh fishes caught by the area's fishermen, or board a pipe raft for a tour of the lagoon's sand bars and oyster racks—and a taste of the local fresh oysters.

📍 No. 208, 19th Neighborhood, Longshan Village, Qigu Dist.
📞 06-787-1058

Longshan Temple

This impressive and ornate temple is devoted to Lord Chi, a plague god, and is one of the landmarks of the Qigu Lagoon area. At the harbor in



Dingshan Bird-watching Pavilion

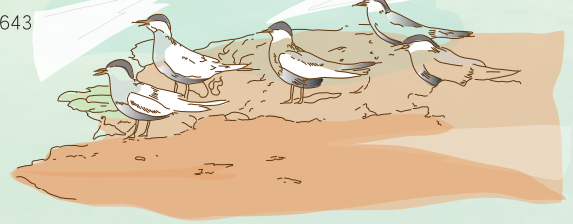
A rich variety of birds have been spotted at the Dingshan habitat in recent years, with numbers of black-faced spoonbills and other migratory species increasing annually. The Southwest Coast National Scenic Area Administration has built two bird-watching pavilions here; the Dingshan Bird-watching Pavilion is a 2-story-high hide-type structure 2 stories high, offering accessible facilities and fine views.

Black-bellied Terns in Beimen Lagoon

As winter turns to spring every year, black-bellied terns fly to Taiwan in their thousands to overwinter in the Beimen Lagoon. In the early morning they fly off to forage in flocks, returning to the lagoon at dusk. Vast numbers of them soaring and circling in the sky is a sight beloved of bird-watchers, especially when matched with the sun setting over the salt fields. Jingzailiao, adjacent to the lagoon, and the Beishilliao River levee are great vantage points for observing the birds.

For bird-watching guide services, contact Hong You-zhi at the Salt Country House B&B.

📞 06-786-2643



HerMin Textile Museum



After more than 40 years of history, HerMin Textile moved into the field of industrial culture and tourism by establishing, in 2014, the HerMin Textile Museum as a tourist factory where visitors can observe real production lines and learn

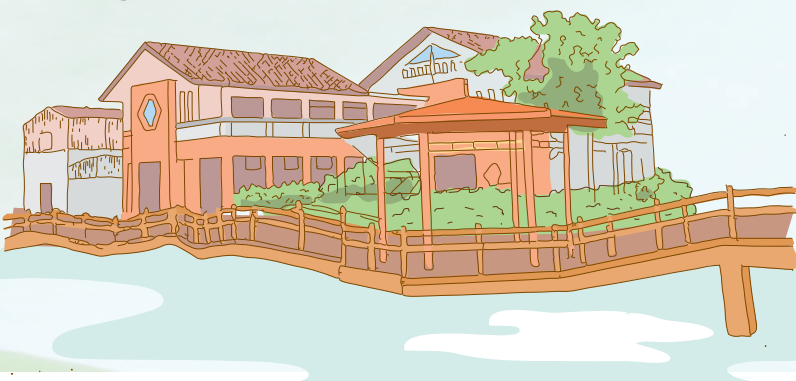
about textile production. The company also displays its products for sale here, and enchanting DIY activities can be enjoyed by prior reservation.

📍 No. 189, Dacheng, Dacheng Village, Qigu Dist.
📞 06-787-5288 ~ 06-787-1611
🕒 Tuesdays to Sundays
(Closed on Mondays, and on festivals as announced on the official website)

Dujia Cultural Exhibition Hall

The ancestors of the Qiu family migrated from China and settled in Taiwan, their home gradually expanded into a community that today is the largest and best-preserved family settlement on the island. The formation of the Dujia community is a microcosm of the development of early Taiwan. This exhibition hall displays the many faces of the community and also presents a precious collection of cultural artifacts from the Nanjing area.

📍 No. 47-7, Dujia Village, Qigu Dist.
📞 06-787-3683



Floating over the Lagoon

The Guoshenggang Lighthouse is located on Dingtou'e Sandbar off Qigu. It is the westernmost lighthouse on Taiwan proper.

Qigu Lagoon

This is Taiwan's foremost lagoon, a 1,600-hectare area of sea enclosed by the shoreline and the Qingshangang, Wangzailiao, and Dingtou'e sandbars. The lagoon has a diversified plant and animal ecology, including a large expanse of mangrove forest, and produces an abundance of fish, shrimp, shellfish, crabs, and oysters. Set nets and oyster racks are scattered around its surface. Standing beside the lagoon, the Seaview Tower offers fine views of the surrounding scenery, with the poetic sunset particularly alluring. Dingtou'e Sandbar has a unique sand-dune landscape, like a desert in the sea, and the Guoshenggang Lighthouse is the westernmost lighthouse on Taiwan proper.

23° 08'08.6"N 120° 03'53.7"E



Coastal Amusement Area

Jiangjun Fishing Harbor

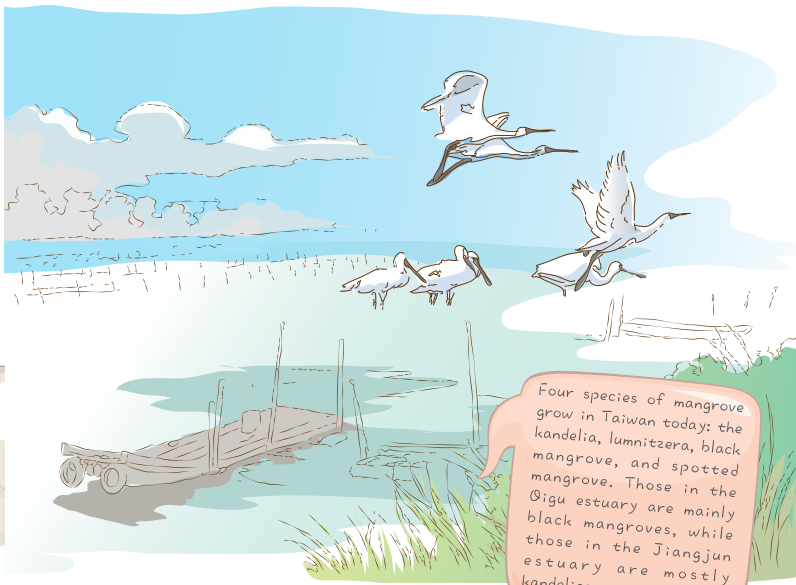
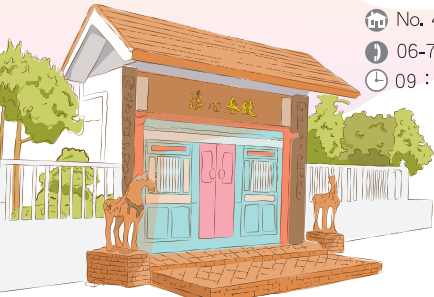
Here you will find a holiday fish market, direct fish sales center, and visitor center. Visitors can buy fresh fish and farm products at the harbor, or savor the delicacies at seafood restaurant and local-flavor snack shops. After the fishing boats return the auctioning soon begins at the fish market, presenting a raucous spectacle of bidding and buying.

No.156 and No.157, Pingsha Village, Jiangjun Dist.
06-793-0460 (Management Center)

Xinanchun Recreational Fishing Village

This destination combines the features of a fishing village with ecotourism. Recreational possibilities here include barbecuing, fishing, and "groping for fish in muddy water"; there are also lodging and dining facilities, as well as a museum with folk-culture and art exhibits. Milkfish, tilapia, and oyster farms offer further experiences of fishing-village life.

No. 42-1, Xinan, Qigu Dist.
06-787-4365
09:00 - 19:30



Hailiao Mangrove Reserve

Estuaries provide ideal ecologies for the growth of mangroves, and large expanses of mangroves flourish in the estuaries of the Qigu and Jiangjun rivers. Here you can easily observe mudskippers, fiddler crabs, fish, shrimp, shellfish, and birds—especially foraging egrets. Trails in the Qigu Mangrove Reserve give up-close access to the mangroves and the wetland ecology, and bird-watching pavilions offer fine opportunities for observing avian life. The Mangrove Interpretation Station provides information on mangroves and other coastal plants.

23° 07'06.2"N 120° 05'22.8"E



Beimen Lagoon



Enclosed by Wangyehgang Sandbar, Qingshangang Sandbar, and the Taiwan coastline, this lagoon is the remnant of the Daofeng Inland Sea after it was filled in by sediment. The lagoon's wetland nourishes rich ecological and marine resources, including clams, shrimp, oysters, and crabs. With little human damage, the lagoon retains its original appearance—and its sunsets are especially enchanting.

23° 15'35.0"N 120° 06'19.8"E



Touring the Lagoon on a Raft

The peaceful lagoon nourishes a richness of fish and ecological resources, with expanses of oyster fields and set nets making it perfect for ecotour activities. The best way to see the lagoon is by raft, allowing you to drift through the oyster racks and fish nets as the raftman tells you about the scenery and the ecology. You will be enchanted by the sight of the Taiwan Strait in the distance and the mangrove forest nearby. You can go ashore on an offshore sandbar, where you can wonder at the diversified ecology and savor the taste of grilled fresh oysters.

You can take a raft from Longshan Fishing Harbor, Liukong Wharf, Nanwan Wharf, or Hailiao Wharf. The rafts generally depart at dusk or at times of low tide, and the trip takes one to two hours. Each raftman travels his own route through the lagoon ecology and the local fishing industry.



Vanaheim (Shuangchun Coastal Recreation Area)

This destination is rich in natural landscapes and ecologies. Its most distinctive feature is the mangrove forest, where the plank walkway gives up-close access to the forest, fiddler crabs, mudskippers, and other denizens of the intertidal zone. The element of "love" was introduced after operation was outsourced, and more ecological education and recreation facilities and services were added.

No. 73-10, Shuangchun, Shuangchun Village, Beimen Dist.
06-786-5355
09:00 - 18:00



Beimen, Jiangjun, Qigu Guide Map



Self Drive

Exit Freeway 1 or Freeway 3 at the system interchange, drive west on Expressway 84 to the Beimen terminus, then drive south on Provincial Highway 61 or 17 to the destination.

Public Transportation

- Tainan Airport** 06-260-1016
No. 775, Jichang Rd., South Dist., Tainan City.
07:00 - 18:00
www.tna.gov.tw
- THSR Tainan Station** 02-6626-8000
No. 100, Guiren Blvd., Guiren Dist., Tainan City.
05:50 - 24:00
www.thsrc.com.tw
- TRA Customer Service**: 0800-765-888
www.railway.gov.tw
- Taiwan Tourist Shuttle Salt Town Coastal Route**: 05-275-0895#333
Chiayi Bus Station ↔ Beimen Visitor Center
www.taiwantrip.com.tw/line/42
- Taiwan Tourist Shuttle 99 Taijiang Route**: 06-221-9177
Tainan Park ↔ Qigu Salt Mountain
www.taiwantrip.com.tw/line/13
- Bus**
 - (1) Ho-hsin Bus 0800-002377 <http://www.ebus.com.tw>
 - (2) Kuokuang Bus 05-2333272 <http://www.kingbus.com.tw/>
 - (3) Ubus 0800-241650 <http://www.ubus.com.tw/>
 - (4) Chiayi Bus 05-2750895 <http://www.cibus.com.tw>
 - (5) City Bus Customer service
Real-Time Bus Arrival Information Voice Query System : 06-299-8484
Public Transportation Office Customer service : 06-223-0330
Tainan Bus Customer service : 06-223-0390
Tainan City Bus Customer service : 06-2937111 / 06-221-9177
Shingnan Bus Customer service : 06-265-3121
Xinying Bus Customer service : 06-633-1100

Accommodation

Wind B&B	No. 57, Jingziao, Yonghua Village, Beimen Dist.	06-786-2643
Salt Country House	No. 80-8, Yonghua Village, Beimen Dist.	06-786-2643
Meixiang B&B	No. 129-25, Huiyagang, 13th Neighborhood, Yugang Village, Beimen Dist.	06-786-0237
Lan People Villa	No. 74-10, Shifen, 13th Neighborhood, Shifen Village, Qigu Dist.	06-788-0138
Spring Garden Golf Ranch & Resort	No. 46-10, Karping, Karping Village, Qigu Dist.	06-789-5588
Yifenduo Rural B&B	No. 126-12, Shulin, Shulin Village, Qigu Dist.	0932-801-461
Shifen Yanju B&B	No. 59-10, Shifen, Shifen Village, Qigu Dist.	06-281-5132
Stone Homestay	No. 130-20, 11th Neighborhood, Zhuqiao Village, Qigu Dist.	06-246-8837
Tonghe Renjia B&B	No. 44-5, Shulin 5th Neighborhood, Shulin Village, Qigu Dist.	0972-316-009
Happy Home	No. 61-1, 8th Neighborhood, Yihe Village, Qigu	06-789-1242



Southwest Coast National Scenic Area Travel Website

Facebook fan club

Taijiang National Park Tourism Website

Tainan Tourism Website